

TK Waterproofing Systems meets Government Standards

TK-SYNTHETIC RESIN FOUNDATION WATERPROOF COATING TK-2001

- * ASTM D412-92 Tensile Strength
- * ASTM D3359-93 Adhesion Test
- * ASTM D579-81 Water Absorption
- * ASTM E96-92 Water Vapor Transmission & Permeability Test
- * ASTM D4541-93 Bond Strength Test
- * VOC Compliant

TK-RUBBERIZED FOUNDATION WATER-PROOF COATING TK-2002

- * ASTM C836 Sec. 6.5 Hardness
- * ASTM C836 Sec. 6.6 Weight Loss
- * ASTM C836 Sec. 6.7 Low Temp Flexibility & Crack Bridging
- * ASTM C836 Sec. 6.9 Film Thickness Vertical Surface
- * ASTM C836 Section 6.12 Extensibility After Heat Aging
- * ASTM C794 Adhesion After Water Immersion
- * ASTM E96-80 Water Vapor Permeance
- * Sec. 4.4 of AC-29 Hydro Static Pressure Resistance
- * VOC Compliant



ISO 9001:2000
Certified

PRODUCTS
Division of Sierra Corporation
11400 West 47th St.
Minnetonka, MN 55343
Office: 952-938-7223
Fax: 952-938-8084
Web Site: www.tkproducts.com
sales@tkproduct.com



**Ask Your Applicator about
the Lifetime Limited Warranty**

Contact:



Waterproofing Systems



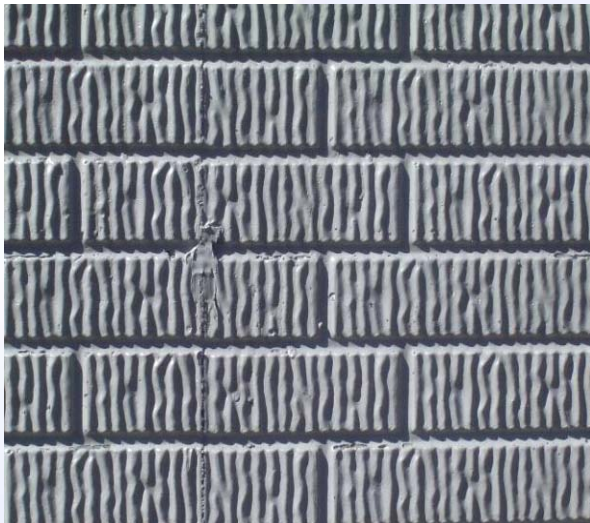
- Protect your life long investment.
- Protect your family from mold and mildew.
- Only use a proven product.
- Stop problems before they begin.
- Waterproof for the same labor cost as damp-proofing.



Waterproofing helps protect a life long investment. Your foundation can be waterproof for virtually the same application cost as damp-proofing.

Concrete can be a sponge, absorbing moisture from the ground around your home; waterproofing the concrete helps stop moisture which helps prevent mold and mildew.

TK Waterproofing Systems form a tight imperious barrier film to help hold back ground water from entering your basement and works with other construction techniques to help prevent radon gases from entering your house.



TK Waterproofing Systems

last for a lifetime unlike asphalt products that get hard and brittle and become ineffective.

TK-Waterproofing Systems are made of polymer formulations specific to this industry.

TK-Synthetic Resin Foundation Coating unlike asphalt based products shows no peeling, blistering, or bubbles even after being boiled in water. ASTM 579-81



TK-Synthetic Resin Foundation Coating, unlike asphalt based products penetrates the surface, forming a mechanical bond stronger than the concrete itself. ASTM D4541-93.

SYSTEM APPLICATIONS

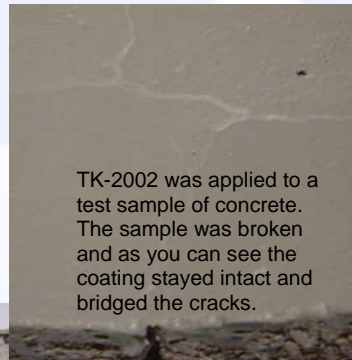
TK-SYNTHETIC RESIN FOUNDATION WATERPROOF COATING TK-2001

can be applied as a single coat. It will waterproof and has great adhesion that will not shrink, chip, peel or degrade in the soil.



2) TK-RUBBERIZED FOUNDATION WATERPROOF COATING TK-2002 applied as a single coat.

TK-RUBBERIZED FOUNDATION WATERPROOF COATING is a rubberized polymer formulation that will bridge cracks up to a 1/16 inch.



TK-2002 was applied to a test sample of concrete. The sample was broken and as you can see the coating stayed intact and bridged the cracks.



Backside of test sample

3) TK-SYNTHETIC RESIN FOUNDATION WATERPROOF COATING TK-2001 applied as a prime coat increases the adhesive abilities of TK-2002 Rubberized Waterproof Foundation Coating.

Top coated with TK-2002 is like adding a rubber liner around your foundation, which will expand and bridge cracks if the wall cracks up to 1/16". *Most superior system in the industry.*



TK-SYNTHETIC RESIN FOUNDATION WATERPROOF COATING TK-2001 is a plastic solution

intended to waterproof/damp-proof poured concrete and parged or unparged concrete block foundation walls above and below grade. It is intended to be applied to the exterior of the wall, but can be applied to the interior as a decorative and moisture vapor-retarder coating on new construction only. TK-2001 is made with recycled materials which is essential on LEED's projects.

TK-RUBBERIZED FOUNDATION WATERPROOF COATING TK-2002 is a rubberized

polymer formulation intended to waterproof poured concrete and parged or unparged concrete block foundation walls above and below grade. A 12 to 15 mil dry film can bridge cracks up to 1/16 inch. TK-2002 is made with recycled material which is essential on a LEED's projects.

