



AS - 1

A commercial grade, 25% solids formulation that cures and seals concrete to ASTM 1315 and 309 standards. As a clear, penetrating, high-quality acrylic/methacrylate resin, it promotes optimal curing and unparalleled protection of concrete surfaces in industrial, commercial, retail and multi-family housing.

- NON-YELLOWING FORMULA
- EXCEPTIONAL MOISTURE RETENTION
- MAXIMUM ABRASION AND CHEMICAL RESISTANCE

BENEFITS

PREMIUM CONCRETE PROTECTION

High solids acrylic resins make this the premier cure and seal for all commercial, industrial and heavy traffic concrete and masonry surfaces. Resistance to abrasion, chemicals, stains, yellowing and water only add to its protective capabilities.

OPTIMAL CURE PERFORMANCE

Moisture retention that exceeds that of any other cure and seal on the market, lending itself to proper cement hydration and optimal strength gain in new concrete. Minimizes checking, cracking, spalling and other surface defects that result from improper curing.

REDUCED MAINTENANCE REQUIREMENTS

Minimizes potential for costly efflorescence, dusting and alkali silica reaction (ASR). Increases surface compression strength and density for higher resistance to liquids, stains, and abrasion over the life of the slab.



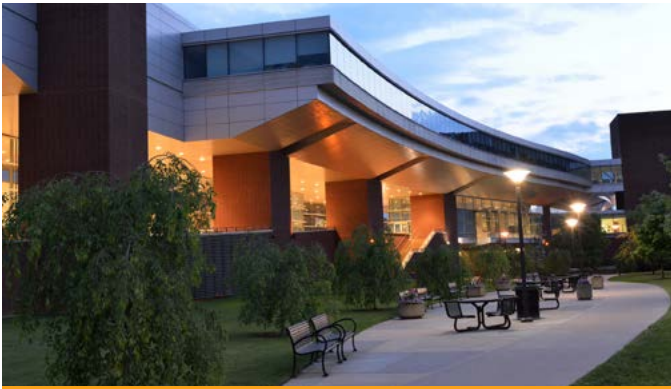
Parking Structures

MOISTURE EFFICIENCY

.18 kg/m² @ 300 ft²/gallon
(max allowed is .40 kg/m² per ASTM C-1315)

TESTING DATA

- ASTM C-1315, TYPE 1, CLASS A,B & C
- ASTM C-309, TYPE 1, CLASS A & B AND TYPE 1D WITH RED DYE ADDED
- FED. TTC-C-800A, TYPE 1, CLASS 1
- AASHTO Des. M-148, Type 1, Clear



Walkways



Shopping Centers

AVAILABLE AT
